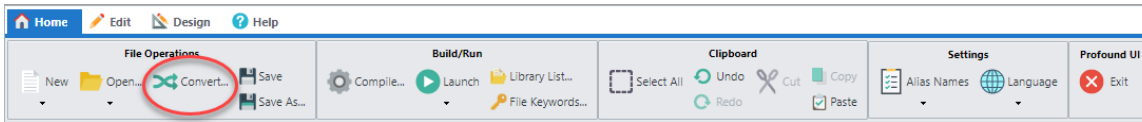


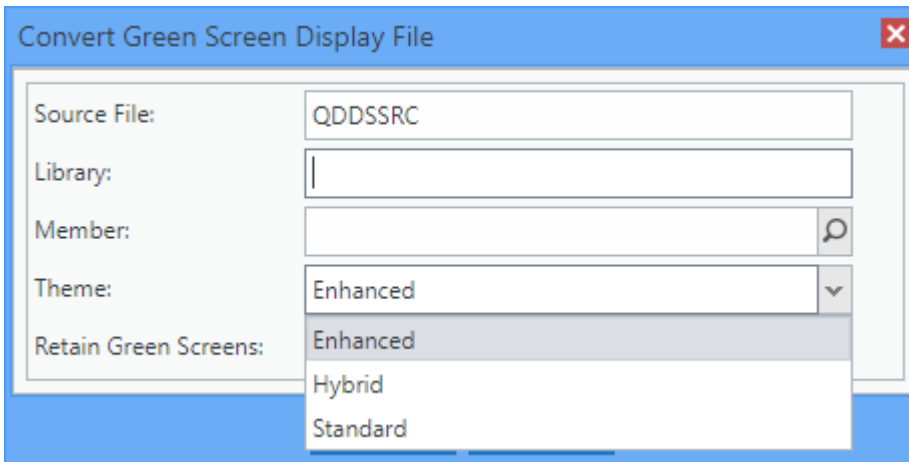
How to Guide

The Profound UI DDS conversion module can read the DDS source of a traditional display file and create a web version. All record formats in the DDS source will be converted so the new DDS source will compile into a display file that is an exact representation of the original. All supported [keywords](#) are translated into equivalent widget properties.

Display files are converted one at a time using the "Convert" button on the menu ribbon within the visual designer.



Simply enter the location of the green screen display file, select a conversion theme and click "Convert".



Selecting and adjusting a theme is the key issue to a conversion project. Not only does the theme control the style/color of the panels, subfile grids, buttons and font, but it also allows the conversion process to make some intelligent decisions such as:

- Detecting subfile options displayed on the screen and changing the 1A subfile field to a dropdown populated with those options.
- Determining which constants & output fields above the subfile are subfile headings and adding them to the grid.

With some JavaScript coding you are also able to add to the theme, conversion rules specific to your site such as:

- Search for ". . . ." and replace it with spaces (removing the "green screen" look of your screens)
- Search for "(Y/N)" followed by a 1A input field and convert the field to a checkbox
- Search for an input field with a particular edit word and convert to a date field

Choosing a suitable font is also very important. Because a green screen uses a mono space font, your converted screens will almost certainly also need a mono space font so the screen elements remain lined up. We have found the **Consolas** font to work well and is widely available.

Setting the **column width** property is also important if you change the font style of size. This is usually set to a value between 7 - 10 and represents the width of each character in pixels. If this is not set correctly your converted screens may be misaligned particularly if you are using long fields padded with spaces to form headings above a subfile or tabulated data. This property is usually adjusted by trial and error by repeatedly adjusting and re-converting one display file until it is correctly aligned.

Example Green Screen

```

PRODDTL                               Product Maintenance

Product Number. . . . . 9999999
Product Name. . . . . BBBBBBBBBBBBBBBBBBBBBBBBBBBBBBBB
Long Description. . . . . BBBBBBBBBBBBBBBBBBBBBBBBBBBBBBB
Price . . . . . 999,999,999.99-
Quantity. . . . . 99999
Category. . . . . 9999999 000000000000000000000000
Special Pricing . . . . . B
Image Id. . . . . _9999999

```

Converted Screens with the column width set incorrecly

Product Numbr	[PRID]
Product Name	[PNAME]
Long Descrip	[PDESC2]
Price . . .	[PPRICE]
Quantity. .	[PS]
Category. .	[PCAT] [CATNAME]
Special Pric	[g . .]
Image Id. .	[PIMG]

Product Number. . .	[PRID]
Product Name. . . .	[PNAME]
Long Description. .	[PDESC2]
Price	[PPRICE]
Quantity.	[PSTOCK]
Category.	[PCAT1] [CATNAME]
Special Pricing . .	[P]
Image Id.	[PIMG]

A complete list of theme properties are listed here: [Themes](#)

If you have a large number of display files, setting up the theme correctly becomes very important as it can save you hundreds of hours of manual adjustments. Profound Logic can provide services to mass convert all your display file source which includes creating and configuring a theme.