

Easily Create, Deploy, and Manage REST API

Develop and deploy REST web services with a lightweight, flexible, and secure toolset for API development and management

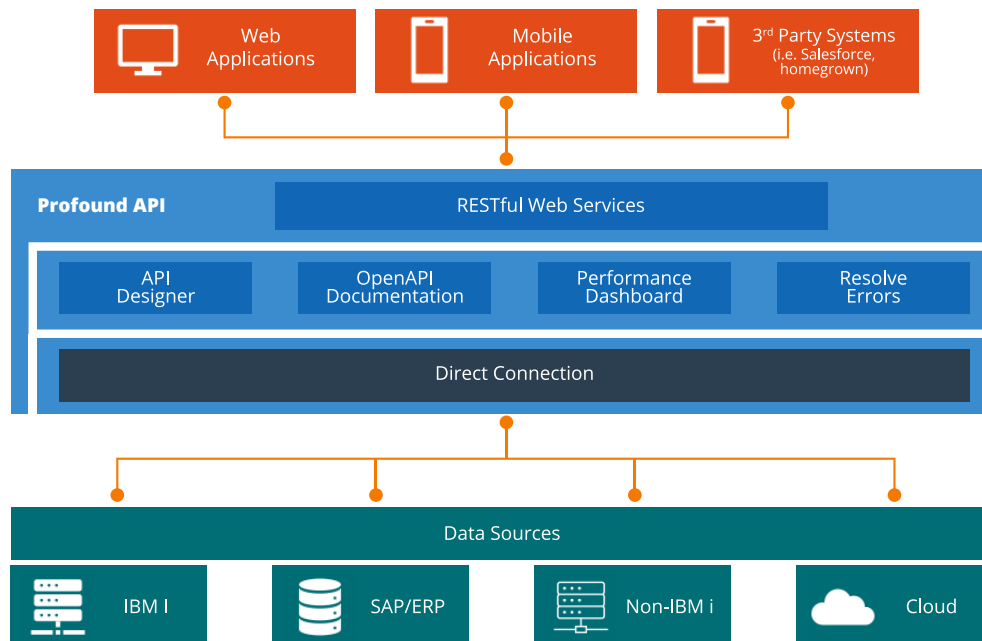
Businesses are using more applications and creating more data than ever before. Unfortunately, this volume and how the applications are designed and managed can create data silos.

APIs (Application Programming Interfaces) are the bridge that make modern, scalable, and portable business systems possible.

Profound API is a complete toolset to create, deploy and manage modern REST web services and turn your IBM i Systems of Record into Systems of Engagement. You can ensure your API meet modern standards without “host based” screen scraping or outdated protocols, which can add to your business’s technical debt.

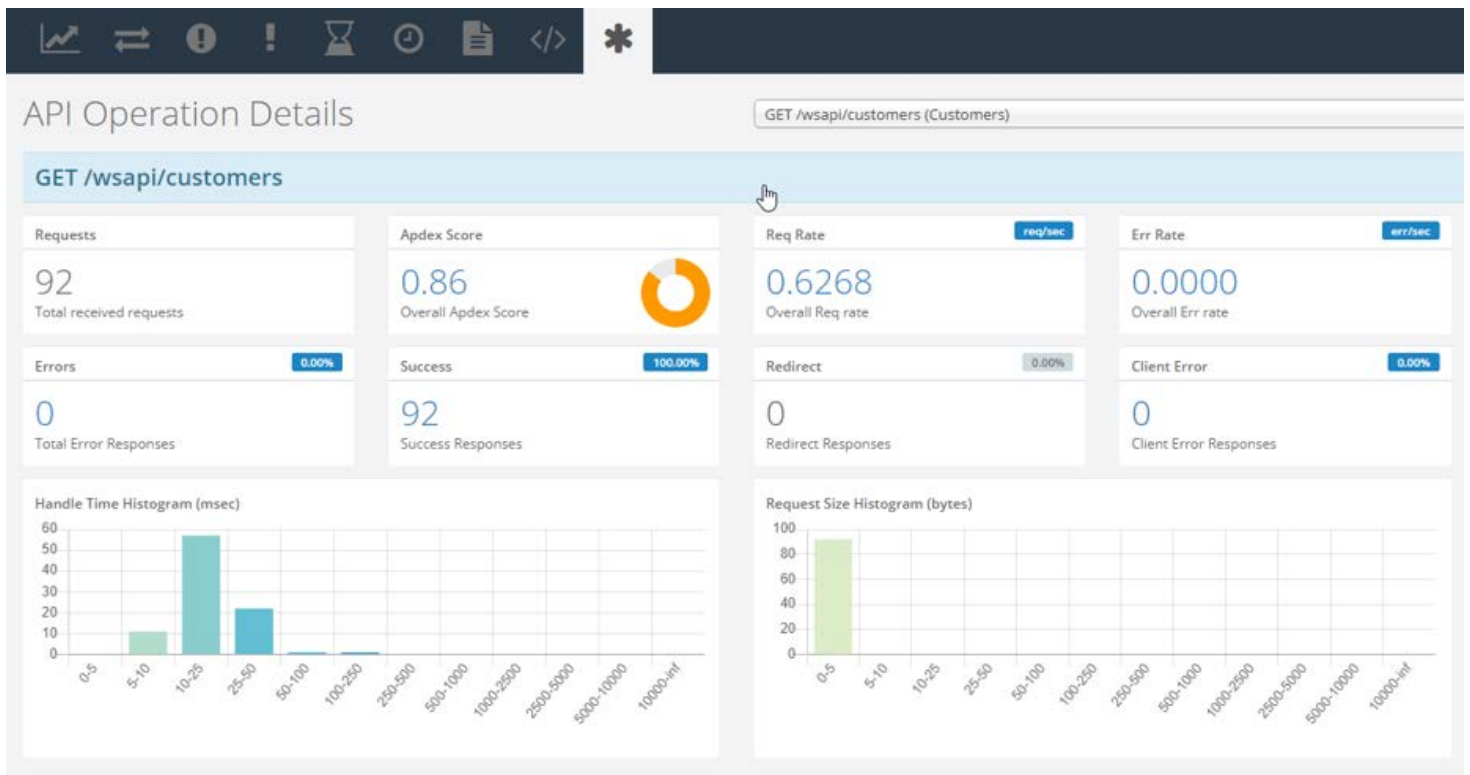
With Profound API, you will be able to:

- Analyze all APIs across the system
- Allow other systems to find and call APIs
- API are called directly without screen scraping or macros, which impacts performance
- Quickly create, categorize, and expose API
- Easily document API without experience with Swagger
- Quickly find, maintain, and test any API within the designer



Profound API Features

- **Rapid API development** - Create new API with a minimal amount of coding
- **Comprehensive toolset** - Easily search, manage, and document API within a single product
- **Rapid API deployment** - One click deployment to an API store (searchable list of API)
- **Flexibility** - Create new API, integrate existing API, and deploy API for both IBM i and non-IBM i applications
- **Automated documentation** - Automatically document and publish API interfaces with built-in Swagger OpenAPI support, without needing to learn the specifics of either
- **Integrated development** - Profound API seamlessly integrates with Profound.js for no-code/low-code applications
- **CRUD generator** - Takes no code to write manually, only a small amount of code is required to get started
- **Built-in API dashboard** - See real-time statistics, find errors, and address performance issues in real-time



Get started today at www.profoundlogic.com/profound-api

"Thanks to Profound API, our applications are now incredibly seamless, flexible, and dynamic. Creating API was incredibly easy. Our business has significantly improved its perception of the IBM i platform." -Kamik Footwear